

KUBIX SERIES

TIME COHERENT SPEAKERS

OVERVIEW

Emerging from the R&D Department and following an extensive engineering work, NEXT-proaudio's new single point source line KUBIX is intended to provide high performance and fidelity as well as a coverage consistency to the venues.

Designed to be included within fixed installations this single point source series were released to create an uniform wave front without hot spots combining high fidelity, transparency, highly accurate and neutral sounding with a compact format to deliver the best sound to every members of the audience.

The family currently consists on 6 models of two-way coaxial loudspeakers: K5 (5", extended LF, passive), K5+ (5", High sensitivity, passive), K8 (8", passive), K8A (8", active 2-way with DSP), K12 (12", passive) and K12A (12", active 2-way with DSP).

The coaxial full-range models are complemented by high-performance subwoofers: K10s (10", passive), K10sA (10", active with DSP), K12s (12", passive) and K12sA (12", active with DSP). Both models are capable to power external passive "Satellites" such as K5, K8 and K12 as well as other units from the NEXT-proaudio range.

With KUBIX is possible to cover practically all install applications including nightclubs, bars, restaurants, convention centres, hotels, museums and houses of worship.

These versatile speakers work equally well as monitor, on a tripod stand or wall/ceiling/corner-mounted using the available range of mounting accessories.

The active enclosures are powered by integrated, lightweight Class-D audio amplifiers, specially engineered to provide high impact, balanced, rich and transparent sound at any volume. The integrated networkable DSP provides extended flexibility allowing the user to adjust several important audio processing parameters, input EQ, Input Level, Satellite Level, Input Delay, Satellite Delay, HP/LP filters and Bass Enhancer. A total of 8 selectable PRESET memories are available, 6 already loaded with factory PRESETS and 2 for user personal adjustments.

The KUBIX Series can be supplied in black or white colour as standard as well as in any RAL colour to special order.

PAGE

26 **K5**
Full-Range
Coaxial Speaker

26 **K5+**
High-Sensitivity
Coaxial Speaker



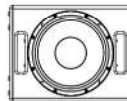
26 **K8A**
Active Full-Range
Coaxial Speaker

26 **K8**
Passive Full-Range
Coaxial Speaker



26 **K12A**
Active Full-Range
Coaxial Speaker

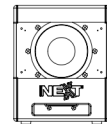
26 **K12**
Passive Full-Range
Coaxial Speaker



PAGE

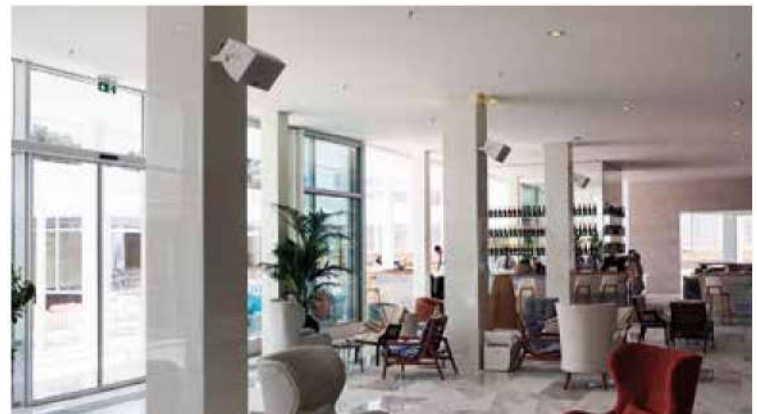
27 **K10sA**
Active Front-Loaded
Subwoofer

27 **K10s**
Passive Front-Loaded
Subwoofer



27 **K12sA**
Active Front-Loaded
Subwoofer

27 **K12s**
Passive Front-Loaded
Subwoofer



KUBIX SERIES

TIME COHERENT SPEAKERS

K5

Full-Range Coaxial Speaker **High-Sensitivity**

- Passive 2-way Loudspeaker
- Ultra-compact Coaxial Design
- 5" LF Speaker and 1" HF Compression Driver
- Microphone Stand U-Bracket
- Full-Range Speaker



K5

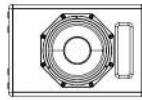
K5+

SPEAKER TYPE	Passive Coaxial Reflex Speaker	
FREQUENCY RESPONSE (-6dB)	112Hz - 18.000Hz	150Hz - 18.000Hz
LOW FREQUENCY EXTENSION (-10dB)	70Hz	100Hz
RECOMMENDED HIGH-PASS FILTER	65Hz	125Hz
SENSITIVITY (1W@1m)	91dB (Full-Space)	93dB (Full-Space)
Calculated Max. SPL (Continuous/Peak)	114dB/117dB (Full-Space)	116dB/119dB (Full-Space)
COVERAGE (HxV)	80° Conical	
DRIVERS	LF: 1 x 5" (127mm)/1.7" (44mm) Voice Coil, B&C custom speaker HF: 1 x 1" (25mm)/1" (25mm) Voice Coil, B&C compression driver	
RATED POWER	200W	200W
IMPEDANCE	8Ω	8Ω
RECOMMENDED AMPLIFIER	MA900	MA900
AMPLIFIER TECHNOLOGY	-	-
SECTION POWER (RMS/Program/Peak)	-	-
CONTROLLER	-	-
SYSTEM PRESETS	-	-
PC CONTROL	-	-
DSP ADJUSTABLE PARAMETERS	-	-
AC OPERATING VOLTAGE	-	-
NOMINAL POWER CONSUMPTION	-	-
CONNECTORS	2 x Neutrik NL4 2 x Screw Terminal	
DIMENSIONS (WxHxD)	170 x 170 x 187mm (6.70 x 6.70 x 7.36in)	
WEIGHT	3.3kg (7.28lb)	3.3kg (7.28lb)

K5+ K8A

Active Full-Range Coaxial Speaker **Passive**

- 2-way Loudspeaker
- Ultra-compact Coaxial Design
- 8" LF Speaker and 1" HF Compression Driver
- Several U-Bracket Applications
- Very Smooth and Clear Sound

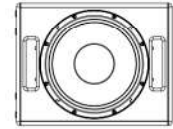


K8A

K8 K12A

Active Full-Range Coaxial Speaker **Passive**

- 2-way Loudspeaker
- Ultra-compact Coaxial Design
- 12" LF Speaker and 1.4" HF Compression Driver
- Several U-Bracket Applications
- Extended Low Frequency Response



K8

K12A

K12

Active Coaxial Reflex Speaker		Passive Coaxial Reflex Speaker
67Hz - 18.000Hz		67Hz - 18.000Hz
59Hz		59Hz
-		55Hz
-		96dB (Full-Space)
122dB/125dB (Full-Space)		123dB/126dB (Full-Space)
100° Conical		
LF: 1 x 8" (210mm)/2" (51mm) Voice Coil, B&C custom speaker HF: 1 x 1" (25mm) exit/1.7" (44mm) Voice Coil, B&C custom compression driver		
-		500W
-		8Ω
-		MA1700
2 channel switched mode class D with DSP		
LF: 400W/540W/1080W		-
HF: 100W/135W/270W		-
PC controlled Networkable DSP 24bit/48kHz		
6 Factory and 2 User, selectable via software or rear panel switch		
Via RS485 and supplied software "SOUNDWARE"		
6 PEQ, delay, HPF, LPF, Polarity, Bass Enhancer, Level, Mute		
90V - 245VAC		
550W		
Signal: 2 x XLR ; Power: 2 x powerCON		2 x Neutrik NL4
397 x 264 x 281mm (15.63 x 10.39 x 11.06in)		
12.2kg (26.9lb)		10.8kg (23.8lb)

Active Coaxial Reflex Speaker		Passive Coaxial Reflex Speaker
53Hz - 18.000Hz		53Hz - 18.000Hz
44Hz		44Hz
-		47Hz
-		98dB (Full-Space)
124dB/127dB (Full-Space)		126.5dB/129.5dB (Full-Space)
80° Conical		
LF: 1 x 12" (300mm)/3" (76mm) Voice Coil, B&C custom speaker HF: 1 x 1.4" (36mm) exit/3" (75mm) Voice Coil, B&C custom compression driver		
-		700W
-		8Ω
-		MA2300/MA3200
2 channel switched mode class D with DSP		
LF: 400W/540W/1080W		-
HF: 100W/135W/270W		-
PC controlled Networkable DSP 24bit/48kHz		
6 Factory and 2 User, selectable via software or rear panel switch		
Via RS485 and supplied software "SOUNDWARE"		
6 PEQ, delay, HPF, LPF, Polarity, Bass Enhancer, Level, Mute		
90V - 245VAC		
550W		
Signal: 2 x XLR ; Power: 2 x powerCON		2 x Neutrik NL4
450 x 354 x 361mm (17.72 x 13.94 x 14.21in)		
17.2kg (37.9lb)		15.6kg (34.4lb)



KUBIX SERIES

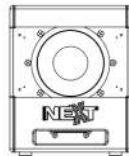
TIME COHERENT SPEAKERS

K10sA

Active

Front-Loaded Subwoofer

- | Bass Reflex Subwoofer
- | Ultra-compact design
- | Discreet design for fixed installation
- | Extended Low Frequency Response
- | 10" Long excursion custom speaker



K10sA

SPEAKER TYPE	Active Reflex Subwoofer	Passive Reflex Subwoofer
FREQUENCY RESPONSE (-6dB)	44Hz - X-over	44Hz - 500Hz
LOW FREQUENCY EXTENSION (-10dB)	37Hz	37Hz
RECOMMENDED HIGH-PASS FILTER	-	34Hz
SENSITIVITY (1W@1m)	-	99dB (Half-Space)
Calculated Max. SPL (Continuous/Peak)	125dB/128dB (Half-Space)	126dB/129dB (Half-Space)
DRIVERS	LF: 1 x 10" (250mm)/2.5" (65.5mm) VC, Long Excursion custom speaker	
RATED POWER	-	500W
IMPEDANCE	-	8Ω
RECOMMENDED AMPLIFIER	-	MA900 (bridge)/MA2300
AMPLIFIER TECHNOLOGY	2 channel switched mode class D with DSP	-
SECTION POWER (RMS/Program/Peak)	Subwoofer (int): 400W/540W/1080W Satellite (ext): 100W/135W/270W (8Ω)	-
CONTROLLER	PC controlled Networkable DSP 24bit/48kHz	-
SYSTEM PRESETS	6 Factory and 2 User, selectable via software or rear panel switch	-
PC CONTROL	Via RS485 and supplied software "SOUNDWARE"	-
DSP ADJUSTABLE PARAMETERS	6 PEQ, delay, HPF, LPF, Polarity, Bass Enhancer, Level, Mute	-
AC OPERATING VOLTAGE	90V - 245VAC	-
NOMINAL POWER CONSUMPTION	550W	-
CONNECTORS	Signal: 2 x XLR ; Power: 2 x powerCON ; Output to external satellite: 1 x Neutrik NL4	2 x Neutrik NL4
DIMENSIONS (WxHxD)	350 x 436 x 389mm (13.77 x 17.16 x 15.31in)	
WEIGHT	15.9kg (35lb)	12.9kg (28.44lb)

K10s K12sA

Passive Active

Front-Loaded Subwoofer

- | Bass Reflex Subwoofer
- | Ultra-compact design
- | Discreet design for fixed installation
- | Extended Low Frequency Response
- | 12" Long excursion custom speaker



K12sA

SPEAKER TYPE	Active Reflex Subwoofer	Passive Reflex Subwoofer
FREQUENCY RESPONSE (-6dB)	43Hz - X-over	43Hz - 500Hz
LOW FREQUENCY EXTENSION (-10dB)	38Hz	38Hz
RECOMMENDED HIGH-PASS FILTER	-	42Hz
SENSITIVITY (1W@1m)	-	101dB (Half-Space)
Calculated Max. SPL (Continuous/Peak)	131.5dB/134.5dB (Half-Space)	132.5dB/135.5dB (Half-Space)
DRIVERS	LF: 1 x 12" (300mm)/3.5" (88mm) VC, Neodymium Long Excursion B&C custom speaker	
RATED POWER	-	1400W
IMPEDANCE	-	8Ω
RECOMMENDED AMPLIFIER	-	MA2300 (bridge)/MA3800
AMPLIFIER TECHNOLOGY	2 channel switched mode class D with DSP	-
SECTION POWER (RMS/Program/Peak)	Subwoofer (internal): 1100W/1480W/2960W Satellite (ext): 550W/740W/1480W (4Ω)	-
CONTROLLER	PC controlled Networkable DSP 24bit/48kHz	-
SYSTEM PRESETS	6 Factory and 2 User, selectable via software or rear panel switch	-
PC CONTROL	Via RS485 and supplied software "SOUNDWARE"	-
DSP ADJUSTABLE PARAMETERS	6 PEQ, delay, HPF, LPF, Polarity, Bass Enhancer, Level, Mute	-
AC OPERATING VOLTAGE	180V - 245VAC	-
NOMINAL POWER CONSUMPTION	770W	-
CONNECTORS	Signal: 2 x XLR ; Power: 2 x powerCON ; Output to external satellite: 1 x Neutrik NL4	2 x Neutrik NL4
DIMENSIONS (WxHxD)	490 x 427 x 370mm (19.29 x 16.81 x 14.56in)	
WEIGHT	22kg (48.5lb)	18.1kg (39.9lb)

K12s

Passive

K12s

